



Together. Leading Care. Better health.

Listowel Memorial Hospital
255 Elizabeth Street East
Listowel, Ontario N4W 2P5
Tel: 519-291-3120

Visit the Foundation at:
www.lmhfoundation.ca

Wingham and District Hospital
270 Carling Terrace
Wingham, Ontario N0G 2W0
Tel: 519-357-3210

Visit the Foundation at:
www.wdhfoundation.ca

Board meetings of the Listowel Wingham Hospitals Alliance alternate between Listowel and Wingham. Please contact either Hospital at extension 6241 if you wish to attend.



The Annual Meetings for the Listowel Memorial Hospital and the Wingham and District Hospital will take place June 11, 2014 in Wingham at the former Wingham Public School gymnasium at 7 p.m.

Volunteer opportunities are available for community members interested in Hospital, Foundation and Auxiliary activities.



Hospital Board Members

Listowel Memorial Hospital

Blair Burns, Chair
Dave Calder
Tom Soltys, Treasurer
Kristine Dekker
Robert Johns
Bert Johnson
Mary Kerr
Kathy Mitchell
Rosemary Rognavaldson

Dr. Russell Latuskie, Chief of Staff
Dr. Arif Qureshi, President of the Medical Staff
Karl Ellis, President and CEO
Angela Stanley, Chief Nursing Executive

Wingham and District Hospital

Amy Miller, Chair
Trevor Seip, Vice Chair
Penny Mulvey, Treasurer
Marg Carswell
Andy McBride
Gladys Peacock
Helen Rintoul
Marc Pittock
One Board Vacancy

Dr. Greg Antoniadis, Chief of Staff
Dr. Jim Shuffield, President of the Medical Staff
Karl Ellis, President and CEO
Angela Stanley, Chief Nursing Executive

Interested in more details? Visit www.lwha.ca

Community Newsletter

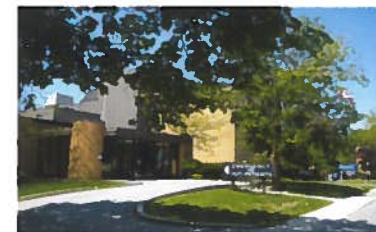
SPRING 2014



Together.



Leading Care.



Better Health.

Health Professionals Recruitment

Access to primary care (physician or nurse practitioner) when you need it is important to all of us. Recent and expected physician retirements have increased the urgency of our physician recruitment efforts in both communities. New physicians joining a medical practice typically assume a patient workload that is half that of a retiring physician. The work of the Wingham & Area Health Professionals Recruitment Committee and the North Perth Health Professionals Recruitment Committee continues to be an important part of our communities' activities to attract health professionals. Supported through contributions from municipalities, hospitals, Foundations and fundraising these committees are working hard to attract well qualified health professionals to our hospitals and communities.

Recruitment is a long term process with medical students completing a portion of their training in our hospitals and returning as residents to fully understand and appreciate the rural experience. Prospective recruits are making a decision about not only where to practice medicine but also the community in which to live and raise a family. Successful recruitment takes the involvement of the entire community.

To learn more contact Jan McKague Weishar in Wingham at 519-357-3711 Ext 5294 or Kim Kowch in Listowel at 519-291-3125 Ext 4108

Emergency Departments

Staffing an emergency department 24 hours a day, 7 days a week can be challenging for our small number of medical staff. In Wingham, 6 physicians cover 65% of the 24 hour shifts. The remaining shifts are staffed by physicians from other communities that come for a day or two. In Listowel, 7 physicians cover 80% of the 12 hour shifts with locum or visiting physicians staffing the remaining 20%. Last year more than 13,000 people visited the Listowel emergency department and over 11,000 patients were seen in Wingham. On arrival patients are assessed by a nurse and those who are the most sick are given priority. Please bring all of your medications with you when you come to the hospital for medical care because it helps the medical staff determine the best course of treatment for you. Patients are reminded that if you need non urgent advice call: Telehealth at 1-866-797-0000. If it is an emergency or you need an ambulance call 911.



Physician and Nursing station at WDH Emergency Department

Ambulatory Care and Specialist Clinics

It is a significant convenience for our patients to be treated locally. Keeping care close to home is made possible at both sites by a broad range of visiting specialists including surgeons, urologists, gynecologists, cardiologists, internists, dermatologists, dental surgeons, geriatrician, pediatrician and ear, nose and throat specialists. Each year these specialists see over 16,000 patients as well as performing procedures in our operating rooms and ambulatory care facilities.



AMBULATORY CARE

Our local general practitioners benefit from the opportunity to seek advice from these specialists on the more difficult or complex cases. Also having specialists visit Listowel and Wingham improves access to specialty services at larger hospitals when patients require advanced or specialized care.

Listowel and Wingham hospitals intend to work harder at ensuring patients from both communities are able to access specialty services at either hospital site.

Our Mission

The Alliance strives for the best possible care of the people we serve. We ensure present and future generations have a wide range of safe, high quality hospital-based services available to them as close to home as possible.

New Portable X-Ray Machines

Portable x-ray equipment allows us to acquire the same quality of image without having to move the patient to the imaging department. The need for this equipment most often occurs in the emergency departments due to the extent of the patient's injuries. It can also be taken to the bedside of fragile patients to eliminate the stress of moving them to the imaging department. Fully digital, these machines enable images to be sent electronically to specialists at larger hospitals ensuring the highest possible level of care for our patients. The Listowel Memorial Hospital has recently received new portable x-ray equipment. Wingham & District Hospital will also have a portable x-ray machine in the near future.

A single portable x-ray machine costs close to \$200,000, which is typically not funded by the Ministry of Health and Long Term Care. Fundraising efforts are critical to our being able to purchase this up to date equipment.



New Portable X-Ray Equipment doesn't require movement of patient

Medication Management

Providing a patient with required medication used to begin with a handwritten physician order followed by 23 separate steps involving multiple team members. This process is now a thing of the past. Following 2 years of planning between 10 regional hospitals, Listowel Wingham Hospitals Alliance now has a new medication administration process. It starts with computerized physician orders and includes a closed looped barcoding system that warns nurses if anything is out of place. The system is designed to ensure the right medication is provided to the right patient at the right time. Electronic medication cabinets and carts with computer monitors and barcode scanners are part of the technology implemented.

This was a complex project that needed to accommodate a drug list that includes thousands of medications and 10 hospitals of various sizes. There have been some 'bugs' to work out of the system and changes continue to be made to make improvements.



Electronic Medication Carts and Cabinets

Hospital Foundations and Auxiliaries Are Essential

The Ministry of Health and Long Term Care provides 90% of the cost of new construction or approved renovations and rarely funds the purchase of new equipment. Therefore, hospital surpluses or local fundraising are required in order to purchase new equipment for our hospitals. The Listowel Memorial Hospital Foundation, Wingham and District Hospital Foundation, the Listowel Memorial Hospital Auxiliary and the Wingham and District Hospital Auxiliary will continue to play an important role in equipping our Hospitals. Donations are directed towards patient care for equipment and supplies. Thank you to the numerous volunteers who generously dedicate their time to support our hospitals and thank you to the staff and the community for your continued support.



LMH Auxiliary donated \$15,000 to the Hospital this year.

Facts & Figures

Fiscal 2012/2013	Listowel Memorial Hospital	Wingham and District Hospital
Beds	50	38
Patient Admissions	1,387	851
Emergency Room Visits	13,396	11,344
Ambulatory Care Visits	10,652	11,524
Total Employees	226	192
Total Operating Budget	\$19,386,895	\$17,966,330
Total Capital Budget	\$1,065,856	\$753,556

Wingham Redevelopment

Planning continues on the redevelopment of the Wingham Hospital. Following approval of the Functional Program (Stage II) submission, the hospital has moved onto Stage III. At Stage III, the hospital will be preparing a preliminary design to reflect the space requirements for departments under redevelopment. Following approval of the Stage III submission expected later in 2014, the hospital will be able to proceed to preparing tender documents for the construction. Although the Ministry of Health and Long Term Care approvals have taken longer than expected, they have supported the planning stage with \$1.6 million of cash contributions.



To ensure all members of the community can easily access the hospital we will be improving accessibility to the main hospital entrance in advance of the bigger redevelopment project by making significant improvements for both vehicle and wheelchair access.